

# NHMLAC Corporate Partner Program



Join the Corporate Partner program at the Natural History Museums of Los Angeles County (NHMLAC) to gain exclusive access to extraordinary experiences that inspire moments of wonder for your employees, clients, and customers.

Enjoy free admission, guest passes, family-friendly activities, VIP events, private tours, and more at both the Natural History Museum and La Brea Tar Pits and Museum.

Natural History Museums of Los Angeles County

NATURAL  
HISTORY  
MUSEUM  
LOS ANGELES COUNTY

LA BREA  
TAR  
PITS  
& MUSEUM

WILLIAM S.  
HART  
MUSEUM

For more information, please  
contact our Corporate Relations  
team at [Sponsorship@nhm.org](mailto:Sponsorship@nhm.org).



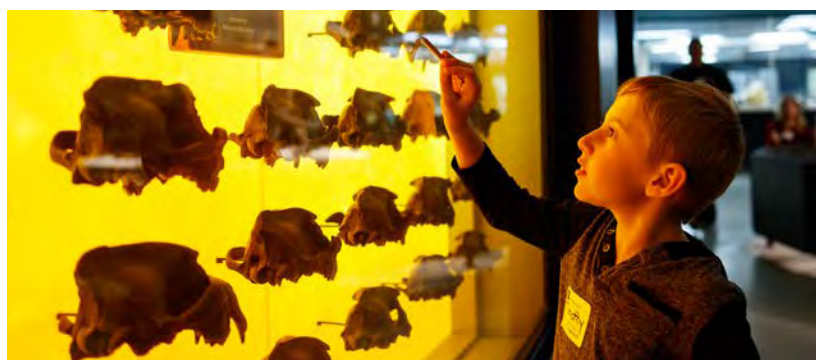
# NHMLAC Corporate Partner Benefits

Join NHMLAC's Corporate Partner program to gain exclusive access to the **Natural History Museum of Los Angeles County** and **La Brea Tar Pits and Museum**. Your support helps provide free educational resources for hundreds of thousands of students, teachers, and community members annually.

PARTNER BENEFITS	\$25,000	\$15,000	\$10,000	\$5,000
<b>Partner Weekends</b> (admission for all employees plus 5 guests)	3	2	2	2
<b>FREE Daily Admission for employees plus guests</b> (Year-round)	Employee +3 Guests	Employee +2 Guests	Employee +1 Guest	
<b>Guest Passes</b>	250	150	100	50
<b>Complimentary Family Memberships</b>	5	4	3	2
<b>Behind-the-scenes Tours</b>	Custom	Custom	X	X
<b>Virtual Museum Presentation</b>	Custom	Custom	X	X
<b>Event Rental Fee Discount</b> (additional expenses covered by the host)	Waived Rental Fee for One Event	50% off Rental Fee	25% off Rental Fee	10% off Rental Fee
<b>Daytime Meeting Space Access</b>	X	X	X	
<b>Executive Experience(s)</b>	3 Visits	2 Visits	1 Visit	
<b>Corporate Activation Opportunity</b>	X			

**Plus, all Corporate Partners receive:**

- **10% employee discount** at Museum stores
- **Invitation to Corporate Partner Appreciation Day** with NHMLAC President Dr. Lori Bettison-Varga
- **Employee volunteer opportunities** offered throughout the year
- **15% discount** on Individual Memberships
- **Select VIP invitations** to opening receptions and special events with Museum leadership
- **Discounted** special exhibit tickets
- **Recognition** on the Museum's website and onsite Donor Wall





# \$25,000 | Benefactor

## FOR EMPLOYEES

- **FREE Daily Admission for employees plus three guests (year-round)**  
Your employees may reserve free General Admission tickets through our dedicated Corporate Partner webstore
- **(3) Partner Weekends**  
During these family-friendly weekends, employees can reserve free General Admission for themselves and up to five guests

## FOR EXECUTIVES & CLIENTS

- **(5) Family-Level Memberships**  
Complimentary memberships provide additional year-round benefits
- **(3) Executive Access Experiences**  
Concierge service for company executives offers complimentary admission, parking, and special exhibit tickets for up to four guests
- **(1) Private Tour**  
Discover our world-renowned collections with a custom behind-the-scenes tour for up to 15 people

## FOR THE COMPANY

- **(250) Guest Passes**  
Digital code provides free access for additional guests in your network
- **Virtual Museum Presentation**  
Arrange a virtual museum presentation for your team hosted by NHMLAC experts
- **Daytime Meeting Space**  
Reserve the Museum's conference space for a company meeting (additional costs assumed by host)
- **Event Rental Fee Waiver**  
Utilize our renowned venues to hold a private after-hours event (additional costs assumed by host)
- **Corporate Activation Opportunity**  
Engage with museum audiences by facilitating an onsite activation
- **Benefit Donation**  
Opportunity to donate guest passes or private tour benefit to a local non-profit partner or community group
- **Partner Recognition**  
Listing on the Museum's website and onsite Donor Wall



# \$15,000 | Advocate

## FOR EMPLOYEES

- **FREE Daily Admission for employees plus two guests (year-round)**  
Your employees may reserve free General Admission tickets through our dedicated Corporate Partner webstore
- **(2) Partner Weekends**  
During these family-friendly weekends, employees can reserve free General Admission for themselves and up to five guests

## FOR EXECUTIVES & CLIENTS

- **(4) Family-Level Memberships**  
Complimentary memberships provide additional year-round benefits
- **(2) Executive Access Experiences**  
Concierge service for company executives offers complimentary admission, parking, and special exhibit tickets for up to four guests
- **(1) Private Tour**  
Discover our world-renowned collections with a custom behind-the-scenes tour for up to 15 people

## FOR THE COMPANY

- **(150) Guest Passes**  
Digital code provides free access for additional guests in your network
- **Virtual Museum Presentation**  
Arrange a virtual museum presentation for your team hosted by NHMLAC experts
- **Daytime Meeting Space**  
Reserve the Museum's conference space for a company meeting (additional costs assumed by host)
- **Discounted Event Rental Fee**  
Take advantage of a 50% discount and utilize our renowned venues to hold a private after-hours event (additional costs assumed by host)
- **Benefit Donation**  
Opportunity to donate guest passes or private tour benefit to a local non-profit partner or community group
- **Partner Recognition**  
Listing on the Museum's website and onsite Donor Wall



# \$10,000 | Executive

## FOR EMPLOYEES

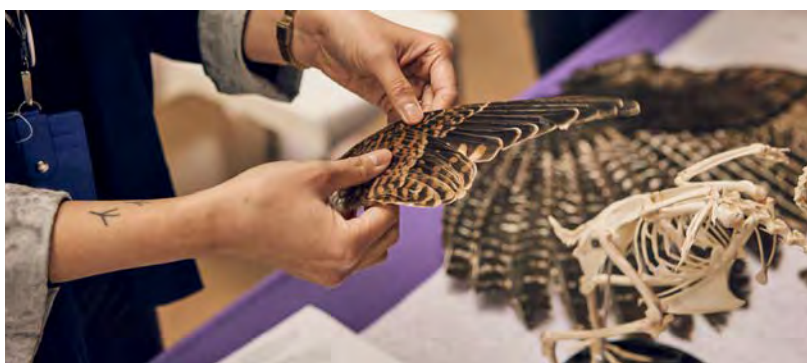
- **FREE Daily Admission for employees plus a guest (year-round)**  
Your employees may reserve free General Admission tickets through our dedicated Corporate Partner webstore
- **(2) Partner Weekends**  
During these family-friendly weekends, employees can reserve free General Admission for themselves and up to five guests

## FOR EXECUTIVES & CLIENTS

- **(3) Family-Level Memberships**  
Complimentary memberships provide additional year-round benefits
- **(1) Executive Access Experiences**  
Concierge service for company executives offers complimentary admission, parking, and special exhibit tickets for up to four guests
- **(1) Private Tour**  
Discover our world-renowned collections with a behind-the-scenes tour for up to 15 people

## FOR THE COMPANY

- **(100) Guest Passes**  
Digital code provides free access for additional guests in your network
- **Virtual Museum Presentation**  
Invite your team to join a virtual museum presentation hosted by NHMLAC experts
- **Daytime Meeting Space**  
Reserve the Museum's conference space for a company meeting (additional costs assumed by host)
- **Discounted Event Rental Fee**  
Take advantage of a 25% discount and utilize our renowned venues to hold a private after-hours event (additional costs assumed by host)
- **Partner Recognition**  
Listing on the Museum's website and onsite Donor Wall





# \$5,000 | Sustainer

## FOR EMPLOYEES

- **(2) Partner Weekends**

During these family-friendly weekends, employees can reserve free General Admission for themselves and up to five guests

## FOR EXECUTIVES & CLIENTS

- **(2) Family-Level Memberships**

Complimentary memberships provide additional year-round benefits

- **(1) Private Tour**

Discover our world-renowned collections with a behind-the-scenes tour for up to 15 people

## FOR THE COMPANY

- **(50) Guest Passes**

Digital code provides free access for additional guests in your network

- **Virtual Museum Presentation**

Invite your team to join a virtual museum presentation hosted by NHMLAC experts

- **Discounted Event Rental Fee**

Take advantage of a 10% discount and utilize our renowned venues to hold a private after-hours event (additional costs assumed by host)

- **Partner Recognition**

Listing on the Museum's website and onsite Donor Wall

### In addition to the premium opportunities listed, all Corporate Partners receive:

- **10% employee discount** at Museum stores
- **Employee volunteer opportunities** offered throughout the year
- **Select VIP invitations** to opening receptions and special events with museum leadership
- **15% discount** on Individual Memberships
- **Invitation to attend Corporate Partner Appreciation Day**, a daytime reception with NHMLAC President Dr. Lori Bettison-Varga
- **Discounted** special exhibit tickets

For more information, please contact our Corporate Relations team at [Sponsorship@nhm.org](mailto:Sponsorship@nhm.org)



# About NHMLAC

With one of the world's most extensive natural and cultural history collections, the Natural History Museums of Los Angeles County are destinations that inspire wonder, discovery, and responsibility for our natural and cultural worlds. We serve one of the most diverse audiences of any cultural institution in the country with year-round educational programming, including free field trips, engaging curriculum, and robust professional development opportunities for 200,000 students and teachers annually. Through exhibitions, programs, and special events, we offer captivating in-person and virtual experiences that enable visitors and online audiences to explore the past, present, and future of our planet.

**Our museums house a world-renowned collection of more than 35 million objects and specimens across three locations:**

**NATURAL  
HISTORY  
MUSEUM**  
LOS ANGELES COUNTY

**The Natural History Museum of Los Angeles County**, L.A.'s first cultural institution, has served as an anchor of Exposition Park for over a century.

**LA BREA  
TAR  
PITS  
& MUSEUM**

**The La Brea Tar Pits**, which is the only active excavation site of its kind in the world, captures the fascinating stories of local life over the past 50,000 years.

**WILLIAM S.  
HART  
MUSEUM**

**The William S. Hart Museum and Ranch** offers a glimpse into the life and home of 1920s-era silent movie star, William S. Hart.

